

- Large Can
- Screw Terminals
- High Ripple
- Up to 550VDC
Rated Voltage
- High
Capacitance
- RoHS Compliant
- +85°C
Maximum
Temperature



The U36D series is ideal for inverter applications requiring high ripple current capabilities. With a voltage range of 6.3 to 550 volts, the number of capacitors in series can be reduced. The U36D capacitors offer very large capacitance of up to 2.2F and a maximum operating temperature of +85°C. These capacitors are available with a variety of high current English or Metric thread terminals. Mounting options include a three-footed clamp or bottom threaded stud. Custom designs are available upon request.

Summary of Specifications

- Screw terminals: high and low post, English and Metric thread.
- Capacitance range: 68µF to 2.2F.
- Voltage range: 6.3 to 550VDC.
- Category temperature range: -40°C to +85°C.
- Leakage current: 0.02CV(µA) or 5mA, whichever is smaller, after 5 minutes at +25°C.
- Standard capacitance tolerance: ±20%
- Nominal case size (D×L): D = 35mm (1.375") to 89mm (3.500"); L = 41mm (1.625") to 219mm (8.625").
- Rated lifetime: 2,000 hours at +85°C with rated ripple current applied.

U36D Series

U36D Specifications - Screw Terminals

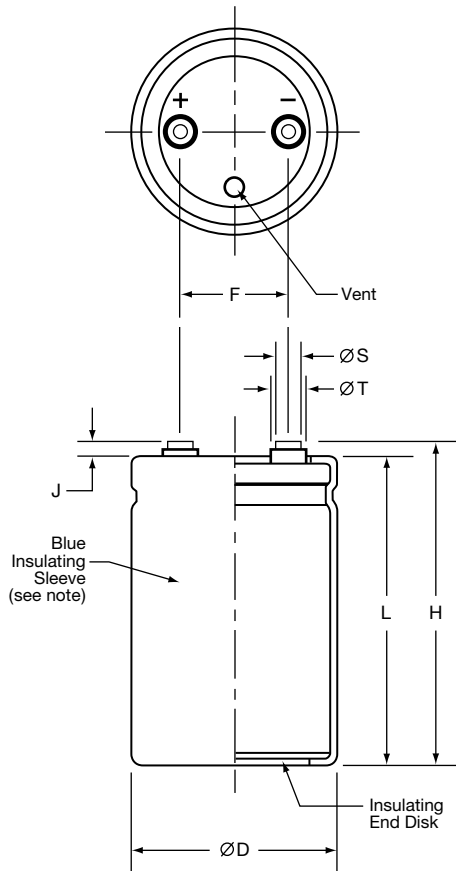
Item	Characteristics																																																							
Category Temperature Range	- 40 to +85°C																																																							
Rated Voltage Range	6.3 to 550VDC																																																							
Capacitance Range	68μF to 2.2F at +25°C, 120Hz																																																							
Capacitance Tolerance	±20% (M) at +25°C, 120Hz																																																							
Leakage Current	I = 0.02CV (μA) or 5mA, whichever is smaller, after 5 minutes at +25°C. Where I = Max. leakage current (μA), C = Nominal capacitance (μF) and V = Rated voltage (V)																																																							
Rated Ripple Current Multipliers	Ambient Temperature (°C) <table border="1"> <tr> <td>≤ +55°C</td> <td>+65°C</td> <td>+75°C</td> <td>+85°C</td> </tr> <tr> <td>2.39</td> <td>2.22</td> <td>1.67</td> <td>1.00</td> </tr> </table> Frequency (Hz) <table border="1"> <tr> <td>50Hz</td> <td>120Hz</td> <td>300Hz</td> <td>1kHz</td> <td>3kHz</td> </tr> <tr> <td>0.8</td> <td>1.0</td> <td>1.1</td> <td>1.3</td> <td>1.4</td> </tr> </table>	≤ +55°C	+65°C	+75°C	+85°C	2.39	2.22	1.67	1.00	50Hz	120Hz	300Hz	1kHz	3kHz	0.8	1.0	1.1	1.3	1.4																																					
≤ +55°C	+65°C	+75°C	+85°C																																																					
2.39	2.22	1.67	1.00																																																					
50Hz	120Hz	300Hz	1kHz	3kHz																																																				
0.8	1.0	1.1	1.3	1.4																																																				
Endurance (Load Life)	The following specifications shall be satisfied when the capacitors are restored to +25°C after subjecting them to DC voltage for 2,000 hours at +85°C with the rated ripple current applied. The sum of the DC voltage and peak AC voltage must not exceed the full rated voltage of the capacitors. Capacitance change: ≤ 20% from initial measurement ESR change : ≤ 300% of initial specified limit Leakage current : ≤ initial specified limit																																																							
Shelf Life	The following specifications shall be satisfied when the capacitors are restored to +25°C after exposing them for 500 hours at +85°C without voltage applied. The rated voltage shall be applied to the capacitors for a minimum of 30 minutes, at least 24 hours and not more than 48 hours before the measurements. Capacitance change: ≤ 20% from initial measurement ESR change : ≤ 300% of initial specified limit Leakage current : ≤ initial specified limit																																																							
Vibration Rating	10-55Hz, 10g sinusoidal in three axes, 2 hours per axis.																																																							
Maximum Tightening Torque	<table border="1"> <thead> <tr> <th>Terminal Code</th> <th>HP/LP</th> <th>HL/ML</th> <th>CD</th> <th>CP</th> <th>CH</th> <th>CA</th> <th>CS</th> </tr> </thead> <tbody> <tr> <td>Thread Size</td> <td>10-32 NF-2B</td> <td>M5x0.8-6H</td> <td></td> <td>1/4-28 NF-2B</td> <td></td> <td>M6x1-6H</td> <td></td> </tr> <tr> <td>3 Threads Engaged</td> <td colspan="3">2.0 N·m (18.0 in·lb)</td> <td colspan="4">4.0 N·m (35.0 in·lb)</td> </tr> <tr> <td>6 Threads Engaged</td> <td colspan="3">2.8 N·m (25.0 in·lb)</td> <td colspan="4">6.2 N·m (55.0 in·lb)</td> </tr> </tbody> </table>	Terminal Code	HP/LP	HL/ML	CD	CP	CH	CA	CS	Thread Size	10-32 NF-2B	M5x0.8-6H		1/4-28 NF-2B		M6x1-6H		3 Threads Engaged	2.0 N·m (18.0 in·lb)			4.0 N·m (35.0 in·lb)				6 Threads Engaged	2.8 N·m (25.0 in·lb)			6.2 N·m (55.0 in·lb)																										
Terminal Code	HP/LP	HL/ML	CD	CP	CH	CA	CS																																																	
Thread Size	10-32 NF-2B	M5x0.8-6H		1/4-28 NF-2B		M6x1-6H																																																		
3 Threads Engaged	2.0 N·m (18.0 in·lb)			4.0 N·m (35.0 in·lb)																																																				
6 Threads Engaged	2.8 N·m (25.0 in·lb)			6.2 N·m (55.0 in·lb)																																																				
Typical Inductance (nH) at 1MHz	<table border="1"> <thead> <tr> <th rowspan="2">Case Diameter (mm)</th> <th colspan="7">Terminal Code</th> </tr> <tr> <th>HP/LP</th> <th>HL/ML</th> <th>CD</th> <th>CP</th> <th>CH</th> <th>CA</th> <th>CS</th> </tr> </thead> <tbody> <tr> <td>ø35.0</td> <td>—</td> <td>—</td> <td>NA</td> <td>NA</td> <td>NA</td> <td>NA</td> <td>NA</td> </tr> <tr> <td>ø50.8</td> <td>—</td> <td>—</td> <td>NA</td> <td>NA</td> <td>NA</td> <td>NA</td> <td>NA</td> </tr> <tr> <td>ø63.5</td> <td>—</td> <td>—</td> <td>—</td> <td>—</td> <td>—</td> <td>—</td> <td>—</td> </tr> <tr> <td>ø76.2</td> <td>30</td> <td>30</td> <td>25</td> <td>20</td> <td>25</td> <td>20</td> <td>25</td> </tr> <tr> <td>ø89.0</td> <td>30</td> <td>30</td> <td>25</td> <td>20</td> <td>25</td> <td>20</td> <td>25</td> </tr> </tbody> </table>	Case Diameter (mm)	Terminal Code							HP/LP	HL/ML	CD	CP	CH	CA	CS	ø35.0	—	—	NA	NA	NA	NA	NA	ø50.8	—	—	NA	NA	NA	NA	NA	ø63.5	—	—	—	—	—	—	—	ø76.2	30	30	25	20	25	20	25	ø89.0	30	30	25	20	25	20	25
Case Diameter (mm)	Terminal Code																																																							
	HP/LP	HL/ML	CD	CP	CH	CA	CS																																																	
ø35.0	—	—	NA	NA	NA	NA	NA																																																	
ø50.8	—	—	NA	NA	NA	NA	NA																																																	
ø63.5	—	—	—	—	—	—	—																																																	
ø76.2	30	30	25	20	25	20	25																																																	
ø89.0	30	30	25	20	25	20	25																																																	
Custom Designs	Custom CV values per case size and termination type may be available upon request. Contact appropriate representative with specific requirements.																																																							

U36D Series

Diagram of Dimensions - Screw Terminals

Large Can/Screw Terminals

Unit: mm (inches)



Case Dimensions and Standard Box Quantities

Case Size Code	ØD +2.0 (0.080)	L ±1.0 (0.040)	F ±0.25 (0.010)	Standard Box Quantity											
A41 A54 A67 A79 A92 AA5 AB7 AD0 AE3	35.0 (1.375)	41 (1.625) 54 (2.125) 67 (2.625) 79 (3.125) 92 (3.625) 105 (4.125) 117 (4.625) 130 (5.125) 143 (5.625)	12.7 (0.500)	100											
C48 C54 C67 C79 C92 CA5 CB7 CD0 CE3		50.8 (2.000)			48 (1.875) 54 (2.125) 67 (2.625) 79 (3.125) 92 (3.625) 105 (4.125) 117 (4.625) 130 (5.125) 143 (5.625)	22.2 (0.875)	49								
D79 DA5 DB7 DD0 DE3					63.5 (2.500)			79 (3.125) 105 (4.125) 117 (4.625) 130 (5.125) 143 (5.625)	28.6 (1.125)	20					
E79 E92 EA5 EB7 ED0 EE3 EM9								76.2 (3.000)			79 (3.125) 92 (3.625) 105 (4.125) 117 (4.625) 130 (5.125) 143 (5.625) 219 (8.625)	31.8 (1.250)	16 9		
FA5 FB7 FD0 FE3											89.0 (3.500)		105 (4.125) 117 (4.625) 130 (5.125) 143 (5.625)	31.8 (1.250)	5

Note:

In some cases, the color of the sleeve may change slightly due to the operating conditions, however, the discoloration will not impair capacitor function.

Terminal Specifications

Terminal Code	Available Case Diameter		Thread Size	Minimum Thread Depth	J ±0.5 (0.020)	H ±2.0 (0.080)	ØS ±0.25 (0.010)	ØT ±0.25 (0.010)
	ØD Code	ØD mm (inches)						
HP	A-E	35.0 – 76.2 (1.375 – 3.000)	10-32 NF-2B	9.5 (0.375)	6.4 (0.250)	L+J	8.0 (0.313)	11.1 (0.438)
LP	A-E	35.0 – 76.2 (1.375 – 3.000)	10-32 NF-2B	5.6 (0.219)	1.6 (0.063)	L+J	8.0 (0.313)	—
HL	A-E	35.0 – 76.2 (1.375 – 3.000)	M5x0.8-6H	9.5 (0.375)	6.4 (0.250)	L+J	8.0 (0.313)	11.1 (0.438)
ML	A-E	35.0 – 76.2 (1.375 – 3.000)	M5x0.8-6H	5.6 (0.219)	1.6 (0.063)	L+J	8.0 (0.313)	11.1 (0.438)
CD	D-E	63.5 – 76.2 (2.500 – 3.000)	M5x0.8-6H	8.5 (0.335)	5.0 (0.200)	L+J	13.0 (0.512)	18.8 (0.740)
CP	D-F	63.5 – 89.0 (2.500 – 3.500)	1/4-28 NF-2B	8.7 (0.344)	2.4 (0.093)	L+J	17.5 (0.689)	—
CH	D-F	63.5 – 89.0 (2.500 – 3.500)	1/4-28 NF-2B	11.9 (0.468)	6.4 (0.250)	L+J	17.5 (0.689)	—
CA	D-F	63.5 – 89.0 (2.500 – 3.500)	M6x1-6H	8.7 (0.344)	2.4 (0.093)	L+J	17.5 (0.689)	—
CS	D-F	63.5 – 89.0 (2.500 – 3.500)	M6x1-6H	11.9 (0.468)	6.4 (0.250)	L+J	17.5 (0.689)	—

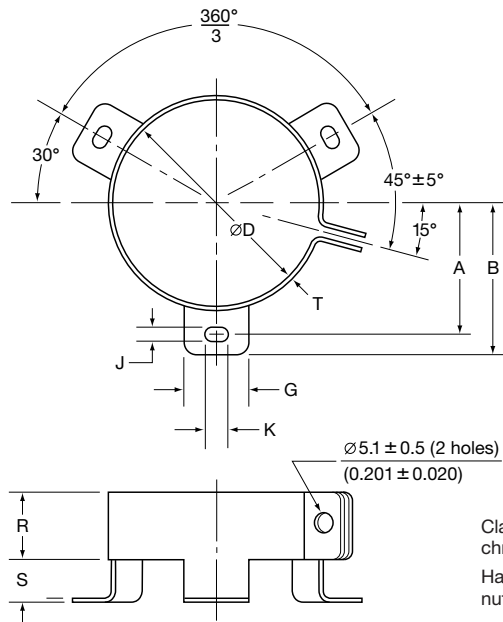
Mounting Hardware is optional. Refer to hardware specifications on the following page.

U36D Series

Mounting Hardware - Screw Terminals

Type C: Three-Footed Clamp

Unit: mm (inches)



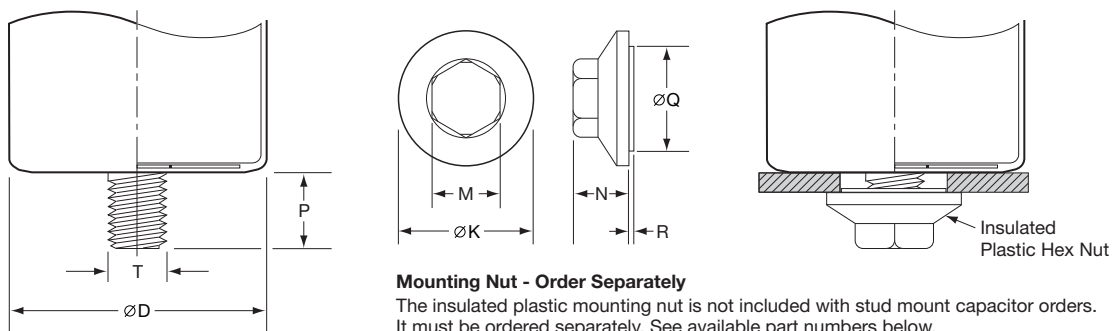
Clamp: Zinc with silver trivalent chromate post treatment.

Hardware: Screw, washer and hexagon nut included with each clamp.

Type C: Clamp Dimensions

Mounting Code	Case ØD	A ±1.0 (0.040)	B ±1.0 (0.040)	G ±1.0 (0.040)	J ±0.5 (0.020)	K ±0.5 (0.020)	R ±1.0 (0.040)	S ±1.0 (0.040)	T ±0.5 (0.020)
C	50.8 (2.000)	31.8 (1.250)	36.5 (1.437)	13.3 (0.524)	4.5 (0.177)	7.1 (0.280)	19.1 (0.751)	9.5 (0.374)	0.8 (0.032)
C	63.5 (2.500)	38.1 (1.500)	42.9 (1.689)	13.3 (0.524)	4.5 (0.177)	7.1 (0.280)	19.1 (0.751)	9.5 (0.374)	0.8 (0.032)
C	76.2 (3.000)	44.5 (1.750)	49.2 (1.937)	13.3 (0.524)	4.5 (0.177)	7.1 (0.280)	19.1 (0.751)	9.5 (0.374)	1.0 (0.040)
C	89.0 (3.500)	50.8 (2.000)	56.5 (2.224)	16.0 (0.630)	4.5 (0.177)	8.0 (0.313)	21.0 (0.827)	9.0 (0.354)	1.0 (0.040)

Type S: Stud Mounting



Mounting Nut - Order Separately

The insulated plastic mounting nut is not included with stud mount capacitor orders. It must be ordered separately. See available part numbers below.

Type S: Stud Dimensions

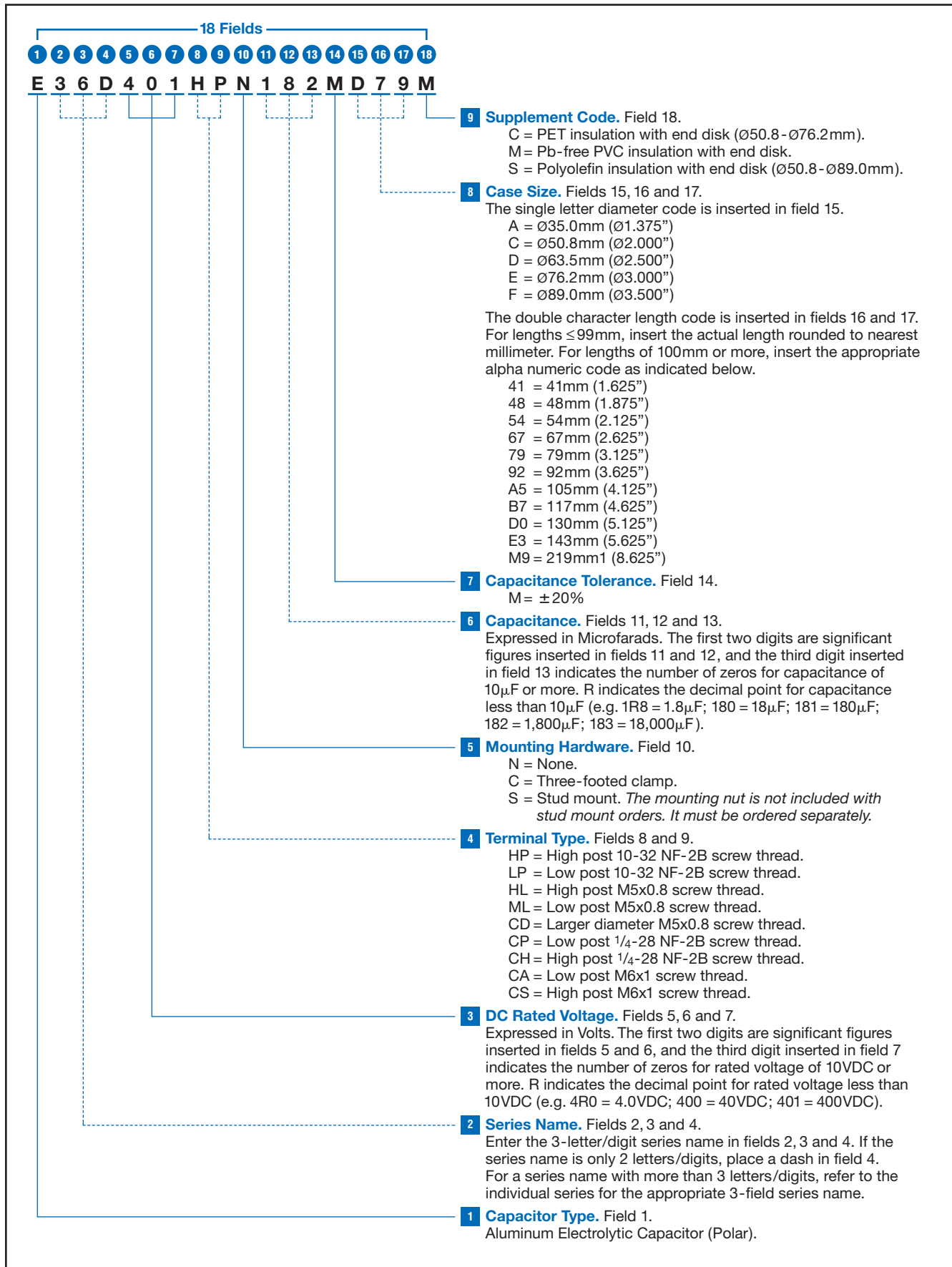
Mounting Code	P ±1.0 (0.040)	T Thread Size
S	16.0 (0.630)	M12

Mounting Nut Dimensions

Part Number	ØK ±2.0 (0.080)	M ±1.0 (0.040)	N ±1.0 (0.040)	ØQ ±1.0 (0.040)	R ±1.0 (0.040)
50-8D	30.0 (1.181)	19.0 (0.748)	18.0 (0.709)	22.0 (0.866)	1.40 (0.055)
50-8E	38.0 (1.496)	19.0 (0.748)	18.0 (0.709)	30.0 (1.181)	1.40 (0.055)

U36D Series

Part Numbering System for U36D Series When ordering, always specify complete 18-field global part number.



U36D Series

Standard Voltage Ratings - Screw Terminals

Rated Voltage (WVDC)	Capacitance (µF)	Global Part Number†	Nominal Case Size* D × L (mm)	Case Size Code	Maximum ESR (mΩ) at +25°C, 120Hz	Rated Ripple Current (A rms) at +85°C, 120Hz
6.3 Volts 8 Volts Surge	39,000	E36D6R3HPN393MA41M	35 × 41	A41	42.7	4.48
	68,000	E36D6R3HPN683MA54M	35 × 54	A54	25.5	6.35
	120,000	E36D6R3HPN124MA79M	35 × 79	A79	15.4	9.47
	180,000	E36D6R3HPN184MAA5M	35 × 105	AA5	11.2	11.10
	220,000	E36D6R3HPN224MAB7M	35 × 117	AB7	9.8	12.55
	270,000	E36D6R3HPN274MAE3M	35 × 143	AE3	8.4	15.27
	120,000	E36D6R3HPN124MC54M	50.8 × 54	C54	16.9	7.72
	220,000	E36D6R3HPN224MC67M	50.8 × 67	C67	9.1	10.85
	270,000	E36D6R3HPN274MC79M	50.8 × 79	C79	8.8	12.60
	390,000	E36D6R3HPN394MC92M	50.8 × 92	C92	7.5	15.71
	470,000	E36D6R3HPN474MCB7M	50.8 × 117	CB7	5.8	17.95
	560,000	E36D6R3HPN564MCD0M	50.8 × 130	CD0	5.2	19.94
	680,000	E36D6R3HPN684MCE3M	50.8 × 143	CE3	5.0	22.31
	470,000	E36D6R3HPN474MD79M	63.5 × 79	D79	8.9	15.39
	680,000	E36D6R3HPN684MDA5M	63.5 × 105	DA5	6.5	20.69
	820,000	E36D6R3HPN824MDB7M	63.5 × 117	DB7	5.8	21.02
	1,000,000	E36D6R3HPN105MDE3M	63.5 × 143	DE3	4.9	24.55
	680,000	E36D6R3HPN684ME79M	76.2 × 79	E79	10.0	17.32
	820,000	E36D6R3HPN824ME92M	76.2 × 92	E92	8.6	19.55
	1,000,000	E36D6R3HPN105MEA5M	76.2 × 105	EA5	7.5	22.10
1,200,000	E36D6R3HPN125MEB7M	76.2 × 117	EB7	6.8	24.59	
1,500,000	E36D6R3HPN155MEE3M	76.2 × 143	EE3	5.6	29.17	
2,200,000	E36D6R3HPN225MEM9M	76.2 × 219	EM9	3.9	41.67	
10 Volts 13 Volts Surge	33,000	E36D100HPN333MA41M	35 × 41	A41	40.9	3.65
	56,000	E36D100HPN563MA54M	35 × 54	A54	25.0	4.99
	82,000	E36D100HPN823MA67M	35 × 67	A67	18.0	6.44
	100,000	E36D100HPN104MA79M	35 × 79	A79	15.0	7.65
	120,000	E36D100HPN124MA92M	35 × 92	A92	12.9	8.45
	150,000	E36D100HPN154MAA5M	35 × 105	AA5	10.9	10.03
	180,000	E36D100HPN184MAB7M	35 × 117	AB7	10.6	11.24
	220,000	E36D100HPN224MAE3M	35 × 143	AE3	8.3	12.71
	82,000	E36D100HPN823MC48M	50.8 × 48	C48	21.0	6.36
	100,000	E36D100HPN104MC54M	50.8 × 54	C54	16.6	7.37
	150,000	E36D100HPN154MC67M	50.8 × 67	C67	11.5	9.18
	220,000	E36D100HPN224MC79M	50.8 × 79	C79	8.8	11.93
	270,000	E36D100HPN274MC92M	50.8 × 92	C92	7.4	13.07
	330,000	E36D100HPN334MCA5M	50.8 × 105	CA5	6.4	15.32
	390,000	E36D100HPN394MCB7M	50.8 × 117	CB7	5.7	16.35
	470,000	E36D100HPN474MCE3M	50.8 × 143	CE3	4.9	19.08
	330,000	E36D100HPN334MD79M	63.5 × 79	D79	8.7	12.77
	560,000	E36D100HPN564MDA5M	63.5 × 105	DA5	6.3	18.77
	680,000	E36D100HPN684MDB7M	63.5 × 117	DB7	5.7	19.14
	820,000	E36D100HPN824MDE3M	63.5 × 143	DE3	4.9	20.73
680,000	E36D100HPN684ME92M	76.2 × 92	E92	8.9	18.43	
820,000	E36D100HPN824MEA5M	76.2 × 105	EA5	7.7	21.39	
1,000,000	E36D100HPN105MED0M	76.2 × 130	ED0	6.0	23.50	
1,200,000	E36D100HPN125MEE3M	76.2 × 143	EE3	5.7	26.84	
1,800,000	E36D100HPN185MEM9M	76.2 × 219	EM9	4.0	37.69	
16 Volts 20 Volts Surge	22,000	E36D160HPN223MA41M	35 × 41	A41	44.2	3.16
	39,000	E36D160HPN393MA54M	35 × 54	A54	26.1	4.50
	56,000	E36D160HPN563MA67M	35 × 67	A67	19.0	5.63
	68,000	E36D160HPN683MA79M	35 × 79	A79	15.8	6.68
	82,000	E36D160HPN823MA92M	35 × 92	A92	13.5	7.86
	100,000	E36D160HPN104MAA5M	35 × 105	AA5	11.6	9.23
	120,000	E36D160HPN124MAB7M	35 × 117	AB7	10.2	10.33
	150,000	E36D160HPN154MAE3M	35 × 143	AE3	8.7	12.69
	56,000	E36D160HPN563MC48M	50.8 × 48	C48	21.7	5.51
	68,000	E36D160HPN683MC54M	50.8 × 54	C54	17.2	6.37

† For terminal, mounting and construction options, refer to the part numbering system for descriptions and codes.

* Refer to diagram of dimensions for detailed case size specifications.

U36D Series

Standard Voltage Ratings - Screw Terminals

Rated Voltage (WVDC)	Capacitance (µF)	Global Part Number†	Nominal Case Size* D × L (mm)	Case Size Code	Maximum ESR (mΩ) at +25°C, 120Hz	Rated Ripple Current (A rms) at +85°C, 120Hz
16 Volts 20 Volts Surge	120,000	E36D160HPN124MC67M	50.8 × 67	C67	12.2	9.00
	150,000	E36D160HPN154MC79M	50.8 × 79	C79	9.2	10.79
	220,000	E36D160HPN224MC92M	50.8 × 92	C92	6.7	13.19
	270,000	E36D160HPN274MCB7M	50.8 × 117	CB7	5.9	15.71
	330,000	E36D160HPN334MCE3M	50.8 × 143	CE3	5.1	19.03
	220,000	E36D160HPN224MD79M	63.5 × 79	D79	8.7	12.59
	390,000	E36D160HPN394MDA5M	63.5 × 105	DA5	6.3	18.91
	470,000	E36D160HPN474MDB7M	63.5 × 117	DB7	5.7	20.24
	560,000	E36D160HPN564MDE3M	63.5 × 143	DE3	4.9	24.15
	470,000	E36D160HPN474ME92M	76.2 × 92	E92	8.7	19.11
	560,000	E36D160HPN564MEA5M	76.2 × 105	EA5	7.5	22.05
	680,000	E36D160HPN684MEB7M	76.2 × 117	EB7	6.3	22.91
820,000	E36D160HPN824MEE3M	76.2 × 143	EE3	5.6	25.28	
1,200,000	E36D160HPN125MEM9M	76.2 × 219	EM9	3.9	34.52	
25 Volts 32 Volts Surge	15,000	E36D250HPN153MA41M	35 × 41	A41	44.0	3.05
	27,000	E36D250HPN273MA54M	35 × 54	A54	25.7	4.38
	39,000	E36D250HPN393MA67M	35 × 67	A67	18.7	5.50
	47,000	E36D250HPN473MA79M	35 × 79	A79	15.7	6.49
	56,000	E36D250HPN563MA92M	35 × 92	A92	13.5	7.60
	68,000	E36D250HPN683MAA5M	35 × 105	AA5	11.6	8.89
	82,000	E36D250HPN823MAB7M	35 × 117	AB7	10.2	9.99
	100,000	E36D250HPN104MAE3M	35 × 143	AE3	8.8	12.12
	39,000	E36D250HPN393MC48M	50.8 × 48	C48	21.7	5.66
	47,000	E36D250HPN473MC54M	50.8 × 54	C54	17.2	6.52
	82,000	E36D250HPN823MC67M	50.8 × 67	C67	12.2	9.15
	100,000	E36D250HPN104MC79M	50.8 × 79	C79	9.2	10.84
	150,000	E36D250HPN154MCA5M	50.8 × 105	CA5	6.7	13.66
	180,000	E36D250HPN184MCB7M	50.8 × 117	CB7	5.9	15.71
	220,000	E36D250HPN224MCE3M	50.8 × 143	CE3	5.1	19.03
	180,000	E36D250HPN184MD79M	63.5 × 79	D79	8.7	13.34
	270,000	E36D250HPN274MDA5M	63.5 × 105	DA5	6.3	18.44
	330,000	E36D250HPN334MDB7M	63.5 × 117	DB7	5.7	20.39
	390,000	E36D250HPN394MDE3M	63.5 × 143	DE3	5.0	24.24
	330,000	E36D250HPN334ME92M	76.2 × 92	E92	8.2	19.61
390,000	E36D250HPN394MEA5M	76.2 × 105	EA5	7.8	22.54	
470,000	E36D250HPN474MEB7M	76.2 × 117	EB7	6.4	24.52	
560,000	E36D250HPN564MEE3M	76.2 × 143	EE3	5.7	26.73	
820,000	E36D250HPN824MEM9M	76.2 × 219	EM9	3.9	38.03	
35 Volts 44 Volts Surge	10,000	E36D350HPN103MA41M	35 × 41	A41	47.1	2.57
	18,000	E36D350HPN183MA54M	35 × 54	A54	27.4	3.70
	27,000	E36D350HPN273MA67M	35 × 67	A67	19.3	4.73
	33,000	E36D350HPN333MA79M	35 × 79	A79	16.1	5.63
	39,000	E36D350HPN393MA92M	35 × 92	A92	13.9	6.56
	47,000	E36D350HPN473MAA5M	35 × 105	AA5	12.0	7.65
	56,000	E36D350HPN563MAB7M	35 × 117	AB7	10.6	8.54
	68,000	E36D350HPN683MAD0M	35 × 130	AD0	10.3	9.89
	22,000	E36D350HPN223MC48M	50.8 × 48	C48	22.4	4.32
	33,000	E36D350HPN333MC54M	50.8 × 54	C54	17.7	5.55
	56,000	E36D350HPN563MC67M	50.8 × 67	C67	12.5	7.68
	68,000	E36D350HPN683MC79M	50.8 × 79	C79	9.5	9.08
	100,000	E36D350HPN104MC92M	50.8 × 92	C92	8.0	11.09
	120,000	E36D350HPN124MCB7M	50.8 × 117	CB7	6.1	12.83
	150,000	E36D350HPN154MCE3M	50.8 × 143	CE3	5.9	15.04
	120,000	E36D350HPN124MD79M	63.5 × 79	D79	9.1	11.34
	180,000	E36D350HPN184MDA5M	63.5 × 105	DA5	6.7	15.68
	220,000	E36D350HPN224MDB7M	63.5 × 117	DB7	5.8	18.17
	270,000	E36D350HPN274MDE3M	63.5 × 143	DE3	5.0	22.01

† For terminal, mounting and construction options, refer to the part numbering system for descriptions and codes.

* Refer to diagram of dimensions for detailed case size specifications.

U36D Series

Standard Voltage Ratings - Screw Terminals

Rated Voltage (WVDC)	Capacitance (µF)	Global Part Number†	Nominal Case Size* D × L (mm)	Case Size Code	Maximum ESR (mΩ) at +25°C, 120Hz	Rated Ripple Current (A rms) at +85°C, 120Hz
35 Volts 44 Volts Surge	220,000	E36D350HPN224ME92M	76.2 × 92	E92	8.9	16.73
	270,000	E36D350HPN274MEA5M	76.2 × 105	EA5	7.8	19.58
	330,000	E36D350HPN334MED0M	76.2 × 130	ED0	6.0	22.72
	390,000	E36D350HPN394MEE3M	76.2 × 143	EE3	5.7	24.75
	560,000	E36D350HPN564MEM9M	76.2 × 219	EM9	3.9	35.94
50 Volts 63 Volts Surge	6,800	E36D500HPN682MA41M	35 × 41	A41	48.8	3.10
	12,000	E36D500HPN123MA54M	35 × 54	A54	28.7	4.34
	18,000	E36D500HPN183MA67M	35 × 67	A67	22.8	5.40
	22,000	E36D500HPN223MA79M	35 × 79	A79	16.8	6.39
	27,000	E36D500HPN273MA92M	35 × 92	A92	14.2	7.47
	33,000	E36D500HPN333MAA5M	35 × 105	AA5	12.1	8.57
	39,000	E36D500HPN393MAB7M	35 × 117	AB7	11.8	9.34
	47,000	E36D500HPN473MAE3M	35 × 143	AE3	9.3	11.03
	15,000	E36D500HPN153MC48M	50.8 × 48	C48	25.4	5.13
	22,000	E36D500HPN223MC54M	50.8 × 54	C54	18.4	6.42
	33,000	E36D500HPN333MC67M	50.8 × 67	C67	12.8	8.20
	47,000	E36D500HPN473MC79M	50.8 × 79	C79	9.7	10.09
	56,000	E36D500HPN563MC92M	50.8 × 92	C92	8.3	11.90
	68,000	E36D500HPN683MCA5M	50.8 × 105	CA5	7.1	13.36
	82,000	E36D500HPN823MCB7M	50.8 × 117	CB7	6.3	15.20
	100,000	E36D500HPN104MCE3M	50.8 × 143	CE3	5.4	17.99
	68,000	E36D500HPN683MD79M	63.5 × 79	D79	9.0	12.06
	120,000	E36D500HPN124MDA5M	63.5 × 105	DA5	6.6	15.71
	150,000	E36D500HPN154MDB7M	63.5 × 117	DB7	5.9	17.81
	180,000	E36D500HPN184MDE3M	63.5 × 143	DE3	5.0	20.74
120,000	E36D500HPN124ME92M	76.2 × 92	E92	8.3	14.86	
150,000	E36D500HPN154MEA5M	76.2 × 105	EA5	7.3	16.74	
180,000	E36D500HPN184MEB7M	76.2 × 117	EB7	6.6	18.42	
220,000	E36D500HPN224MED0M	76.2 × 130	ED0	6.2	20.04	
390,000	E36D500HPN394MEM9M	76.2 × 219	EM9	4.0	31.15	
63 Volts 79 Volts Surge	4,700	E36D630HPN472MA41M	35 × 41	A41	52.8	2.99
	8,200	E36D630HPN822MA54M	35 × 54	A54	31.2	4.17
	12,000	E36D630HPN123MA67M	35 × 67	A67	22.2	5.17
	15,000	E36D630HPN153MA79M	35 × 79	A79	18.2	6.15
	18,000	E36D630HPN183MA92M	35 × 92	A92	15.5	7.14
	22,000	E36D630HPN223MAA5M	35 × 105	AA5	13.2	8.22
	27,000	E36D630HPN273MAD0M	35 × 130	AD0	11.1	9.64
	33,000	E36D630HPN333MAE3M	35 × 143	AE3	9.7	10.75
	12,000	E36D630HPN123MC48M	50.8 × 48	C48	25.2	5.24
	15,000	E36D630HPN153MC54M	50.8 × 54	C54	19.8	6.21
	22,000	E36D630HPN223MC67M	50.8 × 67	C67	13.8	7.91
	33,000	E36D630HPN333MC79M	50.8 × 79	C79	11.2	9.85
	39,000	E36D630HPN393MC92M	50.8 × 92	C92	8.7	11.62
	47,000	E36D630HPN473MCA5M	50.8 × 105	CA5	7.5	13.01
	56,000	E36D630HPN563MCB7M	50.8 × 117	CB7	6.7	14.74
	68,000	E36D630HPN683MCE3M	50.8 × 143	CE3	5.7	17.51
	47,000	E36D630HPN473MD79M	63.5 × 79	D79	9.3	11.86
	82,000	E36D630HPN823MDA5M	63.5 × 105	DA5	6.8	15.60
	100,000	E36D630HPN104MDB7M	63.5 × 117	DB7	6.0	17.66
	120,000	E36D630HPN124MDE3M	63.5 × 143	DE3	5.2	20.55
	100,000	E36D630HPN104ME92M	76.2 × 92	E92	9.1	14.20
	120,000	E36D630HPN124MEA5M	76.2 × 105	EA5	7.9	16.10
	150,000	E36D630HPN154MED0M	76.2 × 130	ED0	6.2	19.88
180,000	E36D630HPN184MEE3M	76.2 × 143	EE3	5.9	21.42	
270,000	E36D630HPN274MEM9M	76.2 × 219	EM9	4.1	31.94	

† For terminal, mounting and construction options, refer to the part numbering system for descriptions and codes.

* Refer to diagram of dimensions for detailed case size specifications.

U36D Series

Standard Voltage Ratings - Screw Terminals

Rated Voltage (WVDC)	Capacitance (µF)	Global Part Number†	Nominal Case Size* D × L (mm)	Case Size Code	Maximum ESR (mΩ) at +25°C, 120Hz	Rated Ripple Current (A rms) at +85°C, 120Hz	
80 Volts 100 Volts Surge	2,700	E36D800HPN272MA41M	35 × 41	A41	61.9	2.77	
	4,700	E36D800HPN472MA54M	35 × 54	A54	36.4	3.87	
	5,600	E36D800HPN562MA67M	35 × 67	A67	30.0	4.44	
	8,200	E36D800HPN822MA79M	35 × 79	A79	21.7	5.65	
	10,000	E36D800HPN103MA92M	35 × 92	A92	18.2	6.60	
	12,000	E36D800HPN123MAA5M	35 × 105	AA5	15.6	7.56	
	15,000	E36D800HPN153MAD0M	35 × 130	AD0	12.9	8.93	
	18,000	E36D800HPN183MAE3M	35 × 143	AE3	12.8	9.99	
	5,600	E36D800HPN562MC48M	50.8 × 48	C48	32.5	4.62	
	8,200	E36D800HPN822MC54M	50.8 × 54	C54	23.2	5.59	
	12,000	E36D800HPN123MC67M	50.8 × 67	C67	16.1	7.32	
	18,000	E36D800HPN183MC79M	50.8 × 79	C79	13.0	9.22	
	22,000	E36D800HPN223MC92M	50.8 × 92	C92	9.8	10.95	
	27,000	E36D800HPN273MCA5M	50.8 × 105	CA5	9.8	12.39	
	33,000	E36D800HPN333MCB7M	50.8 × 117	CB7	8.0	14.12	
	39,000	E36D800HPN393MCE3M	50.8 × 143	CE3	6.3	16.65	
	27,000	E36D800HPN273MD79M	63.5 × 79	D79	10.1	11.34	
	39,000	E36D800HPN393MDA5M	63.5 × 105	DA5	7.4	15.07	
	56,000	E36D800HPN563MDD0M	63.5 × 130	DD0	5.9	18.51	
	47,000	E36D800HPN473ME92M	76.2 × 92	E92	8.7	14.52	
	56,000	E36D800HPN563MEA5M	76.2 × 105	EA5	7.5	16.51	
	68,000	E36D800HPN683MEB7M	76.2 × 117	EB7	6.7	18.28	
	82,000	E36D800HPN823MED0M	76.2 × 130	ED0	6.2	19.88	
	100,000	E36D800HPN104MEE3M	76.2 × 143	EE3	5.5	21.42	
	120,000	E36D800HPN124MEM9M	76.2 × 219	EM9	4.1	31.53	
	100 Volts 125 Volts Surge	1,800	E36D101HPN182MA41M	35 × 41	A41	72.1	2.57
2,700		E36D101HPN272MA54M	35 × 54	A54	47.5	3.39	
3,900		E36D101HPN392MA67M	35 × 67	A67	33.6	4.21	
4,700		E36D101HPN472MA79M	35 × 79	A79	28.1	4.97	
5,600		E36D101HPN562MA92M	35 × 92	A92	23.6	6.22	
8,200		E36D101HPN822MAB7M	35 × 117	AB7	17.2	7.39	
10,000		E36D101HPN103MAD0M	35 × 130	AD0	14.7	8.41	
3,900		E36D101HPN392MC48M	50.8 × 48	C48	36.4	4.38	
5,600		E36D101HPN562MC54M	50.8 × 54	C54	26.2	5.41	
8,200		E36D101HPN822MC67M	50.8 × 67	C67	18.2	6.92	
10,000		E36D101HPN103MC79M	50.8 × 79	C79	14.8	8.23	
15,000		E36D101HPN153MC92M	50.8 × 92	C92	12.5	10.38	
18,000		E36D101HPN183MCB7M	50.8 × 117	CB7	9.0	12.65	
22,000		E36D101HPN223MCD0M	50.8 × 130	CD0	7.8	14.15	
27,000		E36D101HPN273MCE3M	50.8 × 143	CE3	7.6	15.91	
18,000		E36D101HPN183MD79M	63.5 × 79	D79	11.2	10.83	
27,000		E36D101HPN273MDA5M	63.5 × 105	DA5	8.0	14.41	
33,000		E36D101HPN333MDB7M	63.5 × 117	DB7	7.1	16.47	
39,000		E36D101HPN393MDE3M	63.5 × 143	DE3	6.0	19.15	
33,000		E36D101HPN333ME92M	76.2 × 92	E92	9.3	14.05	
39,000		E36D101HPN393MEA5M	76.2 × 105	EA5	8.0	16.00	
47,000		E36D101HPN473MEB7M	76.2 × 117	EB7	7.2	17.65	
56,000		E36D101HPN563MED0M	76.2 × 130	ED0	6.6	19.42	
82,000		E36D101HPN823MEM9M	76.2 × 219	EM9	4.3	30.41	
160 Volts 200 Volts Surge		820	E36D161HPN821MA41M	35 × 41	A41	202.0	1.95
		1,500	E36D161HPN152MA54M	35 × 54	A54	110.0	2.83
	2,200	E36D161HPN222MA67M	35 × 67	A67	76.9	3.57	
	2,700	E36D161HPN272MA79M	35 × 79	A79	57.4	4.26	
	3,300	E36D161HPN332MA92M	35 × 92	A92	51.1	5.05	
	3,900	E36D161HPN392MAA5M	35 × 105	AA5	43.6	5.83	
	4,700	E36D161HPN472MAB7M	35 × 117	AB7	36.7	6.55	
	5,600	E36D161HPN562MAE3M	35 × 143	AE3	31.0	7.85	

† For terminal, mounting and construction options, refer to the part numbering system for descriptions and codes.

* Refer to diagram of dimensions for detailed case size specifications.

U36D
SCREW MOUNT 85°C

U36D Series

Standard Voltage Ratings - Screw Terminals

Rated Voltage (WVDC)	Capacitance (µF)	Global Part Number†	Nominal Case Size* D × L (mm)	Case Size Code	Maximum ESR (mΩ) at +25°C, 120Hz	Rated Ripple Current (A rms) at +85°C, 120Hz
160 Volts 200 Volts Surge	2,200	E36D161HPN222MC48M	50.8 × 48	C48	80.9	3.86
	2,700	E36D161HPN272MC54M	50.8 × 54	C54	64.7	4.49
	3,900	E36D161HPN392MC67M	50.8 × 67	C67	44.7	5.73
	5,600	E36D161HPN562MC79M	50.8 × 79	C79	31.8	7.37
	8,200	E36D161HPN822MC92M	50.8 × 92	C92	22.4	9.53
	10,000	E36D161HPN103MCB7M	50.8 × 117	CB7	18.4	11.71
	12,000	E36D161HPN123MCD0M	50.8 × 130	CD0	15.9	13.46
	10,000	E36D161HPN103MD79M	63.5 × 79	D79	21.5	11.23
	15,000	E36D161HPN153MDA5M	63.5 × 105	DA5	14.9	15.52
	18,000	E36D161HPN183MDB7M	63.5 × 117	DB7	12.5	17.82
	22,000	E36D161HPN223MDE3M	63.5 × 143	DE3	10.6	21.54
	18,000	E36D161HPN183ME92M	76.2 × 92	E92	15.2	17.74
	22,000	E36D161HPN223MEA5M	76.2 × 105	EA5	12.9	20.73
	27,000	E36D161HPN273MED0M	76.2 × 130	ED0	10.3	25.17
33,000	E36D161HPN333MEE3M	76.2 × 143	EE3	9.2	29.02	
47,000	E36D161HPN473MEM9M	76.2 × 219	EM9	6.7	41.98	
200 Volts 250 Volts Surge	680	E36D201HPN681MA41M	35 × 41	A41	205.0	1.78
	1,000	E36D201HPN102MA54M	35 × 54	A54	137.0	2.31
	1,500	E36D201HPN152MA67M	35 × 67	A67	92.0	2.95
	1,800	E36D201HPN182MA79M	35 × 79	A79	76.6	3.48
	2,200	E36D201HPN222MA92M	35 × 92	A92	63.0	4.12
	2,700	E36D201HPN272MAA5M	35 × 105	AA5	51.8	4.85
	3,300	E36D201HPN332MAB7M	35 × 117	AB7	43.0	5.49
	3,900	E36D201HPN392MAD0M	35 × 130	AD0	36.8	6.27
	1,500	E36D201HPN152MC48M	50.8 × 48	C48	97.1	3.19
	2,200	E36D201HPN222MC54M	50.8 × 54	C54	67.0	4.05
	3,300	E36D201HPN332MC67M	50.8 × 67	C67	44.8	5.27
	3,900	E36D201HPN392MC79M	50.8 × 79	C79	37.4	6.15
	5,600	E36D201HPN562MC92M	50.8 × 92	C92	26.6	7.87
	8,200	E36D201HPN822MCB7M	50.8 × 117	CB7	18.9	10.60
	10,000	E36D201HPN103MCE3M	50.8 × 143	CE3	15.7	12.83
	6,800	E36D201HPN682MD79M	63.5 × 79	D79	24.9	9.26
	10,000	E36D201HPN103MDA5M	63.5 × 105	DA5	17.3	12.67
	12,000	E36D201HPN123MDB7M	63.5 × 117	DB7	14.5	14.55
	15,000	E36D201HPN153MDE3M	63.5 × 143	DE3	12.1	17.79
	12,000	E36D201HPN123ME92M	76.2 × 92	E92	17.0	14.49
15,000	E36D201HPN153MEA5M	76.2 × 105	EA5	14.3	17.12	
18,000	E36D201HPN183MEB7M	76.2 × 117	EB7	12.4	19.64	
22,000	E36D201HPN223MED0M	76.2 × 130	ED0	10.8	22.72	
33,000	E36D201HPN333MEM9M	76.2 × 219	EM9	7.3	35.17	
250 Volts 300 Volts Surge	470	E36D251HPN471MA41M	35 × 41	A41	271.2	1.48
	820	E36D251HPN821MA54M	35 × 54	A54	154.3	2.09
	1,200	E36D251HPN122MA67M	35 × 67	A67	105.8	2.64
	1,500	E36D251HPN152MA79M	35 × 79	A79	84.7	3.18
	1,800	E36D251HPN182MA92M	35 × 92	A92	70.8	3.73
	2,200	E36D251HPN222MAA5M	35 × 105	AA5	58.4	4.38
	2,700	E36D251HPN272MAD0M	35 × 130	AD0	47.8	5.21
	3,300	E36D251HPN332MAE3M	35 × 143	AE3	39.8	6.03
	1,200	E36D251HPN122MC48M	50.8 × 48	C48	111.5	2.85
	1,500	E36D251HPN152MC54M	50.8 × 54	C54	87.9	3.34
	2,200	E36D251HPN222MC67M	50.8 × 67	C67	59.8	4.31
	3,300	E36D251HPN332MC79M	50.8 × 79	C79	40.8	5.66
	3,900	E36D251HPN392MC92M	50.8 × 92	C92	34.4	6.57
	4,700	E36D251HPN472MCA5M	50.8 × 105	CA5	28.8	7.65
	5,600	E36D251HPN562MCB7M	50.8 × 117	CB7	24.5	8.76
	6,800	E36D251HPN682MCE3M	50.8 × 143	CE3	20.3	10.58
	4,700	E36D251HPN472MD79M	63.5 × 79	D79	31.0	7.70
	8,200	E36D251HPN822MDA5M	63.5 × 105	DA5	19.2	11.47

† For terminal, mounting and construction options, refer to the part numbering system for descriptions and codes.

* Refer to diagram of dimensions for detailed case size specifications.

U36D Series

Standard Voltage Ratings - Screw Terminals

Rated Voltage (WVDC)	Capacitance (µF)	Global Part Number†	Nominal Case Size* D × L (mm)	Case Size Code	Maximum ESR (mΩ) at +25°C, 120Hz	Rated Ripple Current (A rms) at +85°C, 120Hz
250 Volts 300 Volts Surge	10,000	E36D251HPN103MDB7M	63.5 × 117	DB7	18.4	13.28
	12,000	E36D251HPN123MDE3M	63.5 × 143	DE3	13.6	15.91
	10,000	E36D251HPN103ME92M	76.2 × 92	E92	18.8	13.22
	12,000	E36D251HPN123MEA5M	76.2 × 105	EA5	15.9	15.31
	15,000	E36D251HPN153MED0M	76.2 × 130	ED0	12.6	18.76
	18,000	E36D251HPN183MEE3M	76.2 × 143	EE3	11.2	21.43
	27,000	E36D251HPN273MEM9M	76.2 × 219	EM9	7.7	31.82
315 Volts 365 Volts Surge	390	E36D3B1HPN391MA54M	35 × 54	A54	513.0	1.44
	560	E36D3B1HPN561MA67M	35 × 67	A67	356.0	1.80
	820	E36D3B1HPN821MA79M	35 × 79	A79	243.0	2.35
	1,000	E36D3B1HPN102MA92M	35 × 92	A92	200.0	2.78
	1,200	E36D3B1HPN122MAB7M	35 × 117	AB7	166.0	3.31
	1,500	E36D3B1HPN152MAD0M	35 × 130	AD0	133.0	3.89
	560	E36D3B1HPN561MC48M	50.8 × 48	C48	366.0	1.95
	820	E36D3B1HPN821MC54M	50.8 × 54	C54	248.0	2.47
	1,200	E36D3B1HPN122MC67M	50.8 × 67	C67	168.0	3.18
	1,500	E36D3B1HPN152MC79M	50.8 × 79	C79	134.0	3.81
	2,200	E36D3B1HPN222MC92M	50.8 × 92	C92	92.0	4.94
	2,700	E36D3B1HPN272MCB7M	50.8 × 117	CB7	74.9	6.09
	3,300	E36D3B1HPN332MCD0M	50.8 × 130	CD0	61.8	7.06
	3,900	E36D3B1HPN392MCE3M	50.8 × 143	CE3	52.5	8.01
	2,700	E36D3B1HPN272MD79M	63.5 × 79	D79	77.5	5.83
	3,900	E36D3B1HPN392MDA5M	63.5 × 105	DA5	53.8	7.91
	4,700	E36D3B1HPN472MDB7M	63.5 × 117	DB7	44.7	9.11
	5,600	E36D3B1HPN562MDD0M	63.5 × 130	DD0	38.1	10.41
	4,700	E36D3B1HPN472ME92M	76.2 × 92	E92	46.8	9.07
	5,600	E36D3B1HPN562MEA5M	76.2 × 105	EA5	39.4	10.46
6,800	E36D3B1HPN682MEB7M	76.2 × 117	EB7	32.9	12.07	
8,200	E36D3B1HPN822MED0M	76.2 × 130	ED0	27.8	13.87	
15,000	E36D3B1HPN153MEM9M	76.2 × 219	EM9	15.9	23.71	
350 Volts 400 Volts Surge	220	E36D351HPN221MA41M	35 × 41	A41	887.0	1.17
	330	E36D351HPN331MA54M	35 × 54	A54	545.0	1.53
	470	E36D351HPN471MA67M	35 × 67	A67	379.0	1.91
	680	E36D351HPN681MA79M	35 × 79	A79	262.0	2.47
	820	E36D351HPN821MA92M	35 × 92	A92	217.0	2.91
	1,000	E36D351HPN102MAA5M	35 × 105	AA5	178.0	3.41
	1,200	E36D351HPN122MAD0M	35 × 130	AD0	148.0	4.01
	470	E36D351HPN471MC48M	50.8 × 48	C48	390.0	2.06
	680	E36D351HPN681MC54M	50.8 × 54	C54	267.0	2.60
	1,000	E36D351HPN102MC67M	50.8 × 67	C67	180.0	3.35
	1,200	E36D351HPN122MC79M	50.8 × 79	C79	149.0	3.94
	1,800	E36D351HPN182MC92M	50.8 × 92	C92	100.0	5.15
	2,200	E36D351HPN222MCA5M	50.8 × 105	CA5	82.5	6.04
	2,700	E36D351HPN272MCB7M	50.8 × 117	CB7	67.3	7.03
	3,300	E36D351HPN332MCE3M	50.8 × 143	CE3	55.3	8.51
	2,200	E36D351HPN222MD79M	63.5 × 79	D79	84.5	6.08
	3,300	E36D351HPN332MDA5M	63.5 × 105	DA5	56.6	8.40
	3,900	E36D351HPN392MDB7M	63.5 × 117	DB7	47.9	9.58
	4,700	E36D351HPN472MDD0M	63.5 × 130	DD0	40.4	11.02
	3,900	E36D351HPN392ME92M	76.2 × 92	E92	49.9	9.54
	4,700	E36D351HPN472MEA5M	76.2 × 105	EA5	41.7	11.06
	5,600	E36D351HPN562MEB7M	76.2 × 117	EB7	35.3	12.65
	6,800	E36D351HPN682MED0M	76.2 × 130	ED0	29.6	14.59
	8,200	E36D351HPN822MEE3M	76.2 × 143	EE3	25.1	16.70
	12,000	E36D351HPN123MEM9M	76.2 × 219	EM9	17.4	24.49
	6,800	E36D351CPN682MFA5M	89 × 105	FA5	32.0	11.39
	8,200	E36D351CPN822MFB7M	89 × 117	FB7	27.0	12.88
10,000	E36D351CPN103MFE3M	89 × 143	FE3	23.0	15.17	

† For terminal, mounting and construction options, refer to the part numbering system for descriptions and codes.

* Refer to diagram of dimensions for detailed case size specifications.

U36D Series

Standard Voltage Ratings - Screw Terminals

Rated Voltage (VWDC)	Capacitance (µF)	Global Part Number†	Nominal Case Size* D × L (mm)	Case Size Code	Maximum ESR (mΩ) at +25°C, 120Hz	Rated Ripple Current (A rms) at +85°C, 120Hz
400 Volts 450 Volts Surge	180	E36D401HPN181MA41M	35 × 41	A41	921.0	1.06
	330	E36D401HPN331MA54M	35 × 54	A54	495.0	1.53
	390	E36D401HPN391MA67M	35 × 67	A67	416.0	1.74
	560	E36D401HPN561MA79M	35 × 79	A79	289.0	2.24
	680	E36D401HPN681MA92M	35 × 92	A92	238.0	2.65
	820	E36D401HPN821MAA5M	35 × 105	AA5	197.0	3.09
	1,000	E36D401HPN102MAB7M	35 × 117	AB7	162.0	3.49
	1,200	E36D401HPN122MAE3M	35 × 143	AE3	135.0	4.20
	390	E36D401HPN391MC48M	50.8 × 48	C48	416.0	1.88
	560	E36D401HPN561MC54M	50.8 × 54	C54	295.0	2.36
	820	E36D401HPN821MC67M	50.8 × 67	C67	200.0	3.04
	1,200	E36D401HPN122MC79M	50.8 × 79	C79	137.0	3.94
	1,500	E36D401HPN152MC92M	50.8 × 92	C92	109.0	4.71
	1,800	E36D401HPN182MCA5M	50.8 × 105	CA5	91.5	5.47
	2,200	E36D401HPN222MCB7M	50.8 × 117	CB7	75.0	6.34
	2,700	E36D401HPN272MCE3M	50.8 × 143	CE3	61.3	7.70
	1,800	E36D401HPN182MD79M	63.5 × 79	D79	93.5	5.50
	2,700	E36D401HPN272MDA5M	63.5 × 105	DA5	62.6	7.60
	3,900	E36D401HPN392MDB7M	63.5 × 117	DB7	44.2	9.58
	4,700	E36D401HPN472MDE3M	63.5 × 143	DE3	37.0	11.50
	3,900	E36D401HPN392ME92M	76.2 × 92	E92	46.5	9.54
	4,700	E36D401HPN472MEA5M	76.2 × 105	EA5	38.8	11.06
	5,600	E36D401HPN562MED0M	76.2 × 130	ED0	32.3	13.24
	6,800	E36D401HPN682MEE3M	76.2 × 143	EE3	27.1	15.21
10,000	E36D401HPN103MEM9M	76.2 × 219	EM9	18.7	22.36	
5,600	E36D401CPN562MFA5M	89 × 105	FA5	37.0	10.59	
6,800	E36D401CPN682MFB7M	89 × 117	FB7	31.0	12.02	
8,200	E36D401CPN822MFD0M	89 × 130	FD0	26.0	13.82	
450 Volts 500 Volts Surge	150	E36D451HPN151MA41M	35 × 41	A41	1,687.8	0.96
	270	E36D451HPN271MA54M	35 × 54	A54	923.3	1.39
	330	E36D451HPN331MA67M	35 × 67	A67	749.9	1.60
	470	E36D451HPN471MA79M	35 × 79	A79	525.5	2.05
	560	E36D451HPN561MA92M	35 × 92	A92	440.3	2.40
	680	E36D451HPN681MAA5M	35 × 105	AA5	362.5	2.81
	820	E36D451HPN821MAB7M	35 × 117	AB7	300.7	3.16
	1,000	E36D451HPN102MAE3M	35 × 143	AE3	246.6	3.83
	330	E36D451HPN331MC48M	50.8 × 48	C48	653.4	1.73
	470	E36D451HPN471MC54M	50.8 × 54	C54	535.9	2.16
	680	E36D451HPN681MC67M	50.8 × 67	C67	366.8	2.76
	1,000	E36D451HPN102MC79M	50.8 × 79	C79	249.0	3.60
	1,200	E36D451HPN122MC92M	50.8 × 92	C92	207.1	4.21
	1,500	E36D451HPN152MCA5M	50.8 × 105	CA5	165.8	4.99
	1,800	E36D451HPN182MCB7M	50.8 × 117	CB7	138.3	5.74
	2,200	E36D451HPN222MCE3M	50.8 × 143	CE3	113.2	6.95
	1,500	E36D451HPN152MD79M	63.5 × 79	D79	168.2	5.02
	2,200	E36D451HPN222MDA5M	63.5 × 105	DA5	114.5	6.86
	2,700	E36D451HPN272MDB7M	63.5 × 117	DB7	93.7	7.97
	3,300	E36D451HPN332MDD0M	63.5 × 130	DD0	77.1	9.23
	3,900	E36D451HPN392MDE3M	63.5 × 143	DE3	65.6	10.47
	2,700	E36D451HPN272ME92M	76.2 × 92	E92	95.6	7.93
	3,900	E36D451HPN392MEA5M	76.2 × 105	EA5	78.4	10.08
	4,700	E36D451HPN472MED0M	76.2 × 130	ED0	55.7	12.13
5,600	E36D451HPN562MEE3M	76.2 × 143	EE3	47.2	13.80	
8,200	E36D451HPN822MEM9M	76.2 × 219	EM9	32.4	20.25	
4,700	E36D451CPN472MFA5M	89 × 105	FA5	67.0	7.87	
5,600	E36D451CPN562MFB7M	89 × 117	FB7	56.0	8.94	
6,800	E36D451CPN682MFD0M	89 × 130	FD0	47.0	10.28	

† For terminal, mounting and construction options, refer to the part numbering system for descriptions and codes.

* Refer to diagram of dimensions for detailed case size specifications.

U36D Series

Standard Voltage Ratings - Screw Terminals

Rated Voltage (WVDC)	Capacitance (µF)	Global Part Number†	Nominal Case Size* D × L (mm)	Case Size Code	Maximum ESR (mΩ) at +25°C, 120Hz	Rated Ripple Current (A rms) at +85°C, 120Hz
500 Volts 550 Volts Surge	100	E36D501HPN101MA41M	35 × 41	A41	3,918.0	0.60
	180	E36D501HPN181MA54M	35 × 54	A54	2,141.0	0.87
	220	E36D501HPN221MA67M	35 × 67	A67	1,739.0	1.00
	330	E36D501HPN331MA79M	35 × 79	A79	1,155.0	1.32
	390	E36D501HPN391MA92M	35 × 92	A92	975.0	1.54
	470	E36D501HPN471MAA5M	35 × 105	AA5	808.0	1.79
	560	E36D501HPN561MAB7M	35 × 117	AB7	677.0	2.00
	680	E36D501HPN681MAE3M	35 × 143	AE3	557.0	2.42
	220	E36D501HPN221MC48M	50.8 × 48	C48	1,453.0	1.08
	330	E36D501HPN331MC54M	50.8 × 54	C54	1,177.0	1.39
	470	E36D501HPN471MC67M	50.8 × 67	C67	817.0	1.76
	680	E36D501HPN681MC79M	50.8 × 79	C79	563.0	2.27
	820	E36D501HPN821MC92M	50.8 × 92	C92	465.0	2.67
	1,000	E36D501HPN102MCA5M	50.8 × 105	CA5	381.0	3.12
	1,200	E36D501HPN122MCB7M	50.8 × 117	CB7	317.0	3.59
	1,500	E36D501HPN152MCE3M	50.8 × 143	CE3	253.0	4.40
	1,000	E36D501HPN102MD79M	63.5 × 79	D79	320.0	3.14
	1,500	E36D501HPN152MDA5M	63.5 × 105	DA5	213.0	4.35
	2,200	E36D501HPN222MDB7M	63.5 × 117	DB7	212.0	5.52
	2,200	E36D501HPN222ME92M	76.2 × 92	E92	175.0	5.49
	2,700	E36D501HPN272MEB7M	76.2 × 117	EB7	142.0	6.74
	3,900	E36D501HPN392MEE3M	76.2 × 143	EE3	99.0	8.83
	5,600	E36D501HPN562MEM9M	76.2 × 219	EM9	69.0	12.83
	3,900	E36D501CPN392MFA5M	89 × 105	FA5	131.0	5.63
4,700	E36D501CPN472MFB7M	89 × 117	FB7	109.0	6.62	
5,600	E36D501CPN562MFD0M	89 × 130	FD0	92.0	7.35	
6,800	E36D501CPN682MFE3M	89 × 143	FE3	76.0	8.35	
550 Volts 600 Volts Surge	68	E36D551HPN680MA41M	35 × 41	A41	3,997.0	0.50
	120	E36D551HPN121MA54M	35 × 54	A54	2,227.0	0.71
	150	E36D551HPN151MA67M	35 × 67	A67	1,769.0	0.83
	220	E36D551HPN221MA79M	35 × 79	A79	1,202.0	1.08
	270	E36D551HPN271MA92M	35 × 92	A92	977.0	1.28
	330	E36D551HPN331MAB7M	35 × 117	AB7	797.0	1.54
	390	E36D551HPN391MAD0M	35 × 130	AD0	674.0	1.75
	470	E36D551HPN471MAE3M	35 × 143	AE3	559.0	2.01
	220	E36D551HPN221MC54M	50.8 × 54	C54	1,224.0	1.13
	330	E36D551HPN331MC67M	50.8 × 67	C67	808.0	1.48
	470	E36D551HPN471MC79M	50.8 × 79	C79	565.0	1.89
	560	E36D551HPN561MC92M	50.8 × 92	C92	472.0	2.21
	680	E36D551HPN681MCA5M	50.8 × 105	CA5	388.0	2.58
	820	E36D551HPN821MCB7M	50.8 × 117	CB7	322.0	2.97
	1,000	E36D551HPN102MCE3M	50.8 × 143	CE3	263.0	3.59
	680	E36D551HPN681MD79M	63.5 × 79	D79	391.0	2.59
	1,000	E36D551HPN102MDA5M	63.5 × 105	DA5	265.0	3.89
	1,200	E36D551HPN122MDB7M	63.5 × 117	DB7	220.0	4.56
	1,500	E36D551HPN152MDE3M	63.5 × 143	DE3	176.0	5.46
	1,200	E36D551HPN122ME92M	76.2 × 92	E92	222.0	4.06
	1,500	E36D551HPN152MEA5M	76.2 × 105	EA5	178.0	4.79
	1,800	E36D551HPN182MEB7M	76.2 × 117	EB7	148.0	5.50
	2,200	E36D551HPN222MED0M	76.2 × 130	ED0	121.0	6.36
	3,900	E36D551HPN392MEM9M	76.2 × 219	EM9	69.0	10.71
1,800	E36D551CPN182MFA5M	89 × 105	FA5	159.0	5.11	
2,200	E36D551CPN222MFB7M	89 × 117	FB7	130.0	6.06	
2,700	E36D551CPN272MFD0M	89 × 130	FD0	107.0	6.81	
3,300	E36D551CPN332MFE3M	89 × 143	FE3	88.0	7.76	

† For terminal, mounting and construction options, refer to the part numbering system for descriptions and codes.

* Refer to diagram of dimensions for detailed case size specifications.