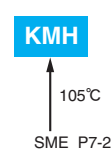


# KMH Series

- Endurance with ripple current : 2,000 hours at 105°C
- RoHS2 Compliant

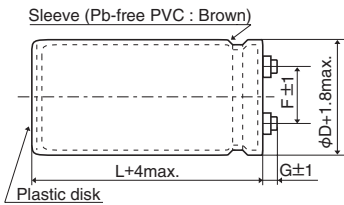


## SPECIFICATIONS

Items	Characteristics						
Category	-40 to +105°C (10 to 100V <sub>dc</sub> ) -25 to +105°C (160 to 400V <sub>dc</sub> )						
Temperature Range							
Rated Voltage Range	10 to 400V <sub>dc</sub>						
Capacitance Tolerance	±20% (M) (at 20°C, 120Hz)						
Leakage Current	I=0.02CV or 5mA, whichever is smaller. Where, I : Max. leakage current (μA), C : Nominal capacitance (μF), V : Rated voltage (V) (at 20°C after 5 minutes)						
Dissipation Factor (tan δ)	Shall not exceed the values shown in the STANDARD RATINGS (at 20°C, 120Hz)						
Low Temperature Characteristics	Capacitance change 10 to 100V <sub>dc</sub> : C(-40°C)/C(+20°C) ≥ 0.6 160 to 400V <sub>dc</sub> : C(-25°C)/C(+20°C) ≥ 0.7 (at 120Hz)						
Insulation Resistance	When measured between the terminals that are connected to each other and to the mounting clamp on the insulating sleeve covering the case by using an insulation resistance meter of 500V <sub>dc</sub> , the insulation resistance shall not be less than 100MΩ.						
Insulation Withstanding Voltage	When a voltage of 2,000V <sub>ac</sub> is applied for 1 minute between the terminals that are connected to each other and to the mounting clamp on the insulating sleeve covering the case, there shall not be electrical damage.						
Endurance	The following specifications shall be satisfied when the capacitors are restored to 20°C after subjected to DC voltage with the rated ripple current is applied (the peak voltage shall not exceed the rated voltage) for 2,000 hours at 105°C. <table border="1"> <tr> <td>Capacitance change</td> <td>≤ ±20% of the initial value</td> </tr> <tr> <td>D.F. (tan δ)</td> <td>≤ 200% of the initial specified value</td> </tr> <tr> <td>Leakage current</td> <td>≤ The initial specified value</td> </tr> </table>	Capacitance change	≤ ±20% of the initial value	D.F. (tan δ)	≤ 200% of the initial specified value	Leakage current	≤ The initial specified value
Capacitance change	≤ ±20% of the initial value						
D.F. (tan δ)	≤ 200% of the initial specified value						
Leakage current	≤ The initial specified value						
Shelf Life	The following specifications shall be satisfied when the capacitors are restored to 20°C after exposing them for 500 hours at 105°C without voltage applied. Before the measurement, the capacitor shall be preconditioned by applying voltage according to Item 4.1 of JIS C 5101-4. <table border="1"> <tr> <td>Capacitance change</td> <td>≤ ±20% of the initial value</td> </tr> <tr> <td>D.F. (tan δ)</td> <td>≤ 200% of the initial specified value</td> </tr> <tr> <td>Leakage current</td> <td>≤ The initial specified value</td> </tr> </table>	Capacitance change	≤ ±20% of the initial value	D.F. (tan δ)	≤ 200% of the initial specified value	Leakage current	≤ The initial specified value
Capacitance change	≤ ±20% of the initial value						
D.F. (tan δ)	≤ 200% of the initial specified value						
Leakage current	≤ The initial specified value						

## DIMENSIONS (Screw-Mount) [mm]

Terminal Code : LG



φ35 to φ63.5 : G=6  
φ76.2 & φ89 : G=5

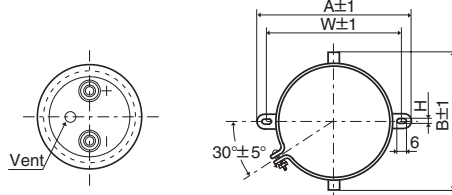
<Screw specifications>

Plus hexagon-headed screw : M5×0.8×10

Maximum screw tightening torque : 3.23Nm

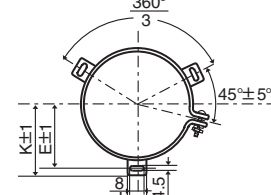
\* The screw and the mounting clamp are separately supplied and not attached to the product.

Mounting Clamp Code : B



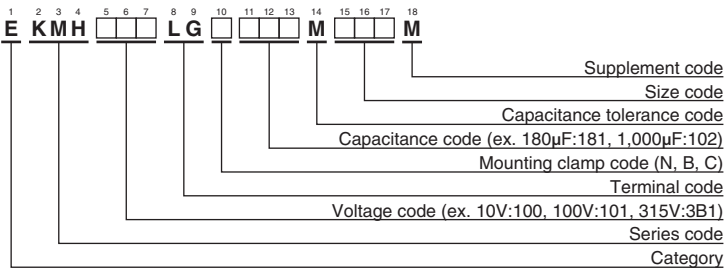
φD	A	B	W	H	F
35	58.0	44.0	48.0	3.5	12.7
50	78.0	64.0	68.0	4.5	22.4
63.5	90.0	76.0	80.0	4.5	28.0
76.2	104.5	90.0	93.5	4.5	31.5

Mounting Clamp Code : C



φD	E	K	J	F
50	32.5	37.0	14.0	22.4
63.5	38.1	43.5	14.0	28.0
76.2	44.5	50.0	14.0	31.5
89	50.8	56.5	16.0	31.5

## PART NUMBERING SYSTEM



Please refer to "Product code guide (screw-mount terminal type)"

◆STANDARD RATINGS

WV (V <sub>dc</sub> )	Cap (μF)	Case size φD×L(mm)	tan δ	Rated ripple current (Arms/105°C, 120Hz)	Part No.	WV (V <sub>dc</sub> )	Cap (μF)	Case size φD×L(mm)	tan δ	Rated ripple current (Arms/105°C, 120Hz)	Part No.	
10	27,000	35 × 50	0.45	4.90	EKM100LGB273MA50M	35	56,000	50 × 100	0.40	11.4	EKM350LGC563MA0M	
	33,000	35 × 50	0.50	5.10	EKM100LGB333MA50M		68,000	50 × 120	0.40	13.6	EKM350LGC683MCC0M	
	39,000	35 × 60	0.50	5.90	EKM100LGB393MA60M		82,000	63.5 × 100	0.45	14.8	EKM350LGC823MDA0M	
	47,000	35 × 80	0.50	7.10	EKM100LGB473MA80M		100,000	63.5 × 120	0.45	17.6	EKM350LGC104MDC0M	
	56,000	35 × 80	0.60	7.10	EKM100LGB563MA80M		120,000	63.5 × 120	0.55	17.6	EKM350LGC124MDC0M	
	68,000	35 × 100	0.60	8.50	EKM100LGB683MAA0M		150,000	76.2 × 120	0.65	19.8	EKM350LGC154MEC0M	
	82,000	35 × 100	0.65	8.90	EKM100LGB823MAA0M		180,000	76.2 × 120	0.80	19.8	EKM350LGC184MEC0M	
	100,000	35 × 120	0.65	10.7	EKM100LGB104MAC0M		220,000	76.2 × 140	0.80	23.4	EKM350LGC224MEE0M	
	120,000	50 × 80	0.75	11.0	EKM100LGC124MC80M		270,000	89 × 140	1.00	25.5	EKM350LGC274MFE0M	
	150,000	50 × 100	0.80	13.2	EKM100LGC154MCA0M		50	3,900	35 × 50	0.20	2.80	EKM500LGB392MA50M
	180,000	50 × 120	0.80	15.7	EKM100LGC184MCC0M			4,700	35 × 50	0.20	3.10	EKM500LGB473MA50M
	220,000	50 × 120	0.85	16.8	EKM100LGC224MCC0M			5,600	35 × 50	0.20	3.30	EKM500LGB562MA50M
	270,000	63.5 × 120	1.00	19.6	EKM100LGC274MDC0M			6,800	35 × 50	0.25	3.30	EKM500LGB682MA50M
	330,000	63.5 × 120	1.20	19.7	EKM100LGC334MDC0M			8,200	35 × 60	0.25	3.80	EKM500LGB822MA60M
	390,000	76.2 × 120	1.50	21.3	EKM100LGC394MCC0M			10,000	35 × 80	0.25	4.60	EKM500LGB103MA80M
	470,000	76.2 × 120	1.80	21.4	EKM100LGC474MEC0M			12,000	35 × 80	0.25	5.10	EKM500LGB123MA80M
	560,000	76.2 × 140	2.00	23.6	EKM100LGC564MEE0M			15,000	35 × 80	0.25	5.70	EKM500LGB153MA80M
680,000	89 × 140	2.40	26.0	EKM100LGC684MFE0M	18,000	35 × 100		0.25	6.70	EKM500LGB183MAA0M		
16	18,000	35 × 50	0.40	4.20	EKM160LGB183MA50M	22,000		35 × 120	0.25	8.10	EKM500LGB223MCC0M	
	22,000	35 × 50	0.40	4.70	EKM160LGB223MA50M	27,000		50 × 80	0.25	9.10	EKM500LGC273MC80M	
	27,000	35 × 60	0.40	5.50	EKM160LGB273MA60M	33,000		50 × 100	0.25	11.1	EKM500LGC333MCA0M	
	33,000	35 × 60	0.45	5.70	EKM160LGB333MA60M	39,000		50 × 120	0.25	13.1	EKM500LGC393MCC0M	
	39,000	35 × 80	0.45	6.80	EKM160LGB393MA80M	47,000		50 × 120	0.30	13.9	EKM500LGC473MCC0M	
	47,000	35 × 80	0.50	7.10	EKM160LGB473MA80M	56,000		63.5 × 100	0.35	13.9	EKM500LGC563MDA0M	
	56,000	35 × 100	0.50	8.40	EKM160LGB563MAA0M	68,000		63.5 × 120	0.35	16.6	EKM500LGC683MDC0M	
	68,000	35 × 100	0.55	8.80	EKM160LGB683MAA0M	82,000		76.2 × 120	0.40	18.9	EKM500LGC823MEC0M	
	82,000	50 × 80	0.55	10.7	EKM160LGC823MC80M	100,000	76.2 × 120	0.45	19.5	EKM500LGC104MEC0M		
	100,000	50 × 80	0.65	10.8	EKM160LGC104MC80M	120,000	76.2 × 120	0.55	19.5	EKM500LGC124MEC0M		
	120,000	50 × 100	0.65	13.1	EKM160LGC124MCA0M	150,000	89 × 140	0.60	23.9	EKM500LGC154MFE0M		
	150,000	50 × 120	0.70	15.3	EKM160LGC154MCC0M	180,000	89 × 140	0.75	23.9	EKM500LGC184MFE0M		
	180,000	50 × 120	0.80	15.7	EKM160LGC184MCC0M	63	2,700	35 × 50	0.20	2.30	EKM630LGB272MA50M	
	220,000	63.5 × 120	0.85	19.2	EKM160LGC224MDC0M		3,300	35 × 50	0.20	2.50	EKM630LGB332MA50M	
	270,000	63.5 × 120	1.00	19.6	EKM160LGC274MDC0M		3,900	35 × 50	0.20	2.80	EKM630LGB392MA50M	
	330,000	76.2 × 120	1.30	21.1	EKM160LGC334MEC0M		4,700	35 × 50	0.20	3.10	EKM630LGB472MA50M	
	390,000	76.2 × 120	1.50	21.3	EKM160LGC394MEC0M		5,600	35 × 60	0.20	3.50	EKM630LGB562MA60M	
470,000	76.2 × 140	1.60	24.2	EKM160LGC474MEE0M	6,800		35 × 60	0.20	3.90	EKM630LGB682MA60M		
560,000	89 × 140	2.00	28.1	EKM160LGC564MFE0M	8,200		35 × 80	0.20	4.70	EKM630LGB822MA80M		
680,000	89 × 140	2.40	28.5	EKM160LGC684MFE0M	10,000		35 × 80	0.25	4.70	EKM630LGB103MA80M		
25	12,000	35 × 50	0.35	3.70	EKM250LGB123MA50M		12,000	35 × 100	0.25	5.50	EKM630LGB123MAA0M	
	15,000	35 × 50	0.35	4.10	EKM250LGB153MA50M		15,000	35 × 120	0.25	6.60	EKM630LGB153MAC0M	
	18,000	35 × 60	0.35	4.80	EKM250LGB183MA60M		18,000	50 × 80	0.25	7.40	EKM630LGC183MC80M	
	22,000	35 × 60	0.35	5.30	EKM250LGB223MA60M		22,000	50 × 100	0.25	9.00	EKM630LGC223MCA0M	
	27,000	35 × 80	0.35	6.40	EKM250LGB273MA80M		27,000	50 × 120	0.25	10.9	EKM630LGC273MCC0M	
	33,000	35 × 80	0.40	6.70	EKM250LGB333MA80M		33,000	50 × 120	0.25	12.0	EKM630LGC333MCC0M	
	39,000	35 × 100	0.40	7.80	EKM250LGB393MAA0M		39,000	63.5 × 100	0.30	12.5	EKM630LGC393MDA0M	
	47,000	35 × 120	0.40	9.30	EKM250LGB473MAC0M		47,000	63.5 × 120	0.30	14.9	EKM630LGC473MDC0M	
	56,000	50 × 80	0.45	9.70	EKM250LGC563MC80M		56,000	63.5 × 120	0.30	16.3	EKM630LGC563MDC0M	
	68,000	50 × 100	0.45	11.2	EKM250LGC683MCA0M	68,000	76.2 × 120	0.35	18.4	EKM630LGC683MEC0M		
	82,000	50 × 100	0.50	11.2	EKM250LGC823MCA0M	82,000	76.2 × 140	0.40	20.0	EKM630LGC823MEE0M		
	100,000	50 × 120	0.50	14.8	EKM250LGC104MCC0M	100,000	76.2 × 140	0.50	20.0	EKM630LGC104MEE0M		
	120,000	63.5 × 100	0.65	14.9	EKM250LGC124MDA0M	120,000	89 × 140	0.60	21.8	EKM630LGC124MFE0M		
	150,000	63.5 × 120	0.65	17.9	EKM250LGC154MDC0M	80	2,200	35 × 50	0.15	2.40	EKM800LGB272MA50M	
	180,000	63.5 × 120	0.80	17.9	EKM250LGC184MDC0M		2,700	35 × 50	0.15	2.70	EKM800LGB272MA50M	
	220,000	76.2 × 120	0.85	21.3	EKM250LGC224MEC0M		3,300	35 × 50	0.15	3.00	EKM800LGB332MA50M	
	270,000	76.2 × 120	1.00	21.7	EKM250LGC274MEC0M		3,900	35 × 60	0.15	3.40	EKM800LGB392MA60M	
330,000	76.2 × 140	1.20	23.4	EKM250LGC334MEE0M	4,700		35 × 60	0.15	3.70	EKM800LGB472MA60M		
390,000	89 × 140	1.50	24.9	EKM250LGC394MFE0M	5,600		35 × 80	0.15	4.50	EKM800LGB562MA80M		
35	8,200	35 × 50	0.30	3.30	EKM350LGB822MA50M		6,800	35 × 80	0.15	4.90	EKM800LGB682MA80M	
	10,000	35 × 50	0.30	3.60	EKM350LGB103MA50M		8,200	35 × 100	0.20	5.10	EKM800LGB822MAA0M	
	12,000	35 × 60	0.30	4.20	EKM350LGB123MA60M		10,000	35 × 120	0.20	6.10	EKM800LGB103MAC0M	
	15,000	35 × 60	0.30	4.70	EKM350LGB153MA60M		12,000	50 × 80	0.20	6.70	EKM800LGC123MC80M	
	18,000	35 × 80	0.30	5.70	EKM350LGB183MA80M		15,000	50 × 100	0.20	8.30	EKM800LGC153MCA0M	
	22,000	35 × 80	0.30	6.30	EKM350LGB223MA80M		18,000	50 × 120	0.20	9.90	EKM800LGC183MCC0M	
	27,000	35 × 100	0.30	7.50	EKM350LGB273MAA0M		22,000	50 × 120	0.20	11.0	EKM800LGC223MCC0M	
	33,000	35 × 120	0.30	9.00	EKM350LGB333MAC0M		27,000	63.5 × 100	0.25	11.4	EKM800LGC273MDA0M	
	39,000	50 × 80	0.35	9.20	EKM350LGC393MC80M		33,000	76.2 × 100	0.25	13.9	EKM800LGC333MEA0M	
	47,000	50 × 100	0.35	11.2	EKM350LGC473MCA0M		39,000	76.2 × 100	0.30	13.9	EKM800LGC393MEA0M	

◆STANDARD RATINGS

WV (V <sub>dc</sub> )	Cap (μF)	Case size φD×L(mm)	tan δ	Rated ripple current (Arms/105°C, 120Hz)	Part No.	WV (V <sub>dc</sub> )	Cap (μF)	Case size φD×L(mm)	tan δ	Rated ripple current (Arms/105°C, 120Hz)	Part No.
80	47,000	76.2 × 120	0.30	16.5	EKMH800LGC473MEC0M	250	330	35 × 50	0.15	0.90	EKMH251LGB331MA50M
	56,000	76.2 × 120	0.30	18.1	EKMH800LGC563MEC0M		390	35 × 50	0.15	1.00	EKMH251LGB391MA50M
	68,000	76.2 × 140	0.35	19.7	EKMH800LGC683MEE0M		470	35 × 50	0.15	1.10	EKMH251LGB471MA50M
	82,000	89 × 140	0.40	22.1	EKMH800LGC823MFE0M		560	35 × 50	0.15	1.20	EKMH251LGB561MA50M
100	1,800	35 × 50	0.10	2.70	EKMH101LGB182MA50M	680	35 × 60	0.15	1.40	EKMH251LGB681MA60M	
	2,200	35 × 50	0.10	3.00	EKMH101LGB222MA50M	820	35 × 80	0.15	1.60	EKMH251LGB821MA80M	
	2,700	35 × 60	0.10	3.50	EKMH101LGB272MA60M	1,000	35 × 80	0.20	1.60	EKMH251LGB102MA80M	
	3,300	35 × 80	0.10	4.20	EKMH101LGB332MA80M	1,200	35 × 80	0.20	1.80	EKMH251LGB122MA80M	
	3,900	35 × 80	0.12	4.20	EKMH101LGB392MA80M	1,500	35 × 100	0.20	2.10	EKMH251LGB152MAA0M	
	4,700	35 × 100	0.12	5.00	EKMH101LGB472MAA0M	1,800	35 × 120	0.20	2.50	EKMH251LGB182MAC0M	
	5,600	35 × 100	0.12	5.40	EKMH101LGB562MAA0M	2,200	50 × 80	0.20	2.90	EKMH251LGB102MA80M	
	6,800	35 × 120	0.15	5.80	EKMH101LGB682MAC0M	2,700	50 × 100	0.20	3.50	EKMH251LGC272MCA0M	
	8,200	50 × 80	0.15	6.40	EKMH101LGC822MC80M	3,300	50 × 120	0.20	4.20	EKMH251LGC332MCC0M	
	10,000	50 × 100	0.15	7.80	EKMH101LGC103MCA0M	3,900	50 × 120	0.20	4.60	EKMH251LGC392MCC0M	
	12,000	50 × 120	0.15	9.30	EKMH101LGC123MCC0M	4,700	63.5 × 120	0.20	5.70	EKMH251LGC472MCA0M	
	15,000	50 × 120	0.15	10.4	EKMH101LGC153MCC0M	5,600	63.5 × 120	0.20	6.30	EKMH251LGC562MDC0M	
	18,000	63.5 × 100	0.20	10.4	EKMH101LGC183MDA0M	6,800	76.2 × 120	0.20	7.70	EKMH251LGC682MEC0M	
	22,000	63.5 × 120	0.20	12.5	EKMH101LGC223MDC0M	8,200	76.2 × 120	0.20	8.40	EKMH251LGC822MEC0M	
	27,000	76.2 × 120	0.25	13.7	EKMH101LGC273MEC0M	10,000	76.2 × 140	0.20	10.0	EKMH251LGC103MEE0M	
	33,000	76.2 × 120	0.25	15.2	EKMH101LGC333MEC0M	12,000	89 × 140	0.20	11.9	EKMH251LGC123MFE0M	
39,000	76.2 × 140	0.30	16.1	EKMH101LGC393MEE0M	315	180	35 × 50	0.10	0.80	EKMH315LGB181MA50M	
47,000	89 × 140	0.30	19.3	EKMH101LGC473MFE0M		220	35 × 50	0.10	0.90	EKMH315LGB221MA50M	
56,000	89 × 140	0.30	21.1	EKMH101LGC563MFE0M		270	35 × 50	0.10	1.00	EKMH315LGB271MA50M	
160	560	35 × 50	0.15	1.20		EKMH161LGB561MA50M	330	35 × 50	0.10	1.10	EKMH315LGB331MA50M
	680	35 × 50	0.15	1.30		EKMH161LGB681MA50M	390	35 × 50	0.10	1.20	EKMH315LGB391MA50M
	820	35 × 50	0.15	1.40		EKMH161LGB821MA50M	470	35 × 60	0.10	1.40	EKMH315LGB471MA60M
	1,000	35 × 50	0.15	1.60		EKMH161LGB102MA50M	560	35 × 60	0.10	1.50	EKMH315LGB561MA60M
	1,200	35 × 60	0.15	1.90		EKMH161LGB122MA60M	680	35 × 80	0.10	1.70	EKMH315LGB681MA80M
	1,500	35 × 60	0.15	2.10		EKMH161LGB152MA60M	820	35 × 80	0.15	1.70	EKMH315LGB821MA80M
	1,800	35 × 80	0.15	2.50		EKMH161LGB182MA80M	1,000	35 × 100	0.15	2.00	EKMH315LGB102MAA0M
	2,200	35 × 80	0.15	2.80		EKMH161LGB222MA80M	1,200	35 × 120	0.15	2.40	EKMH315LGB122MAC0M
	2,700	35 × 100	0.15	3.30		EKMH161LGB272MAA0M	1,500	50 × 80	0.15	2.70	EKMH315LGC152MC80M
	3,300	35 × 120	0.15	3.80		EKMH161LGB332MAC0M	1,800	50 × 100	0.15	3.30	EKMH315LGC182MCA0M
	3,900	50 × 80	0.20	3.80		EKMH161LGC392MC80M	2,200	50 × 120	0.15	4.00	EKMH315LGC222MCC0M
	4,700	50 × 100	0.20	4.60		EKMH161LGC472MCA0M	2,700	50 × 120	0.15	4.40	EKMH315LGC272MCC0M
	5,600	50 × 100	0.20	5.10		EKMH161LGC562MCA0M	3,300	63.5 × 100	0.15	5.10	EKMH315LGC332MDA0M
	6,800	50 × 120	0.20	6.10	EKMH161LGC682MCC0M	3,900	63.5 × 120	0.15	6.00	EKMH315LGC392MDC0M	
	8,200	63.5 × 100	0.20	7.00	EKMH161LGC822MDA0M	4,700	76.2 × 100	0.15	6.80	EKMH315LGC472MEA0M	
	10,000	63.5 × 120	0.20	8.40	EKMH161LGC103MDC0M	5,600	76.2 × 120	0.15	8.00	EKMH315LGC562MED0M	
12,000	76.2 × 100	0.20	9.40	EKMH161LGC123MEA0M	6,800	76.2 × 130	0.15	9.20	EKMH315LGC682MED0M		
15,000	76.2 × 120	0.20	11.4	EKMH161LGC153MEC0M	8,200	89 × 140	0.15	11.4	EKMH315LGC822MFE0M		
18,000	76.2 × 140	0.20	13.4	EKMH161LGC183MEE0M	10,000	89 × 140	0.15	12.6	EKMH315LGC103MFE0M		
22,000	89 × 140	0.25	14.5	EKMH161LGC223MFE0M	350	180	35 × 50	0.10	0.80	EKMH351LGB181MA50M	
27,000	89 × 140	0.25	16.0	EKMH161LGC273MFE0M		220	35 × 50	0.10	0.90	EKMH351LGB221MA50M	
200	330	35 × 50	0.15	0.90		EKMH201LGB331MA50M	270	35 × 50	0.10	1.00	EKMH351LGB271MA50M
	390	35 × 50	0.15	1.00		EKMH201LGB391MA50M	330	35 × 50	0.10	1.10	EKMH351LGB331MA50M
	470	35 × 50	0.15	1.10		EKMH201LGB471MA50M	390	35 × 60	0.10	1.30	EKMH351LGB391MA60M
	560	35 × 50	0.15	1.20		EKMH201LGB561MA50M	470	35 × 60	0.10	1.40	EKMH351LGB471MA60M
	680	35 × 50	0.15	1.30		EKMH201LGB681MA50M	560	35 × 80	0.10	1.60	EKMH351LGB561MA80M
	820	35 × 50	0.15	1.40		EKMH201LGB821MA50M	680	35 × 80	0.15	1.60	EKMH351LGB681MA80M
	1,000	35 × 60	0.15	1.70		EKMH201LGB102MA60M	820	35 × 100	0.15	1.80	EKMH351LGB821MAA0M
	1,200	35 × 60	0.15	1.90		EKMH201LGB122MA60M	1,000	35 × 120	0.15	2.20	EKMH351LGB122MAC0M
	1,500	35 × 80	0.15	2.30		EKMH201LGB152MA80M	1,200	50 × 80	0.15	2.40	EKMH351LGC122MC80M
	1,800	35 × 80	0.15	2.50		EKMH201LGB182MA80M	1,500	50 × 100	0.15	3.00	EKMH351LGC152MCA0M
	2,200	35 × 100	0.15	3.00		EKMH201LGB222MAA0M	1,800	50 × 120	0.15	3.60	EKMH351LGC182MCC0M
	2,700	35 × 120	0.15	3.60		EKMH201LGB272MAC0M	2,200	50 × 120	0.15	4.00	EKMH351LGC222MCC0M
	3,300	50 × 80	0.15	4.10		EKMH201LGC332MC80M	2,700	63.5 × 100	0.15	4.60	EKMH351LGC272MDA0M
	3,900	50 × 100	0.15	4.90		EKMH201LGC392MCA0M	3,900	76.2 × 120	0.15	6.70	EKMH351LGC392MEC0M
	4,700	63.5 × 100	0.20	5.30	EKMH201LGC472MDA0M	5,600	76.2 × 130	0.15	8.30	EKMH351LGC562MED0M	
	5,600	63.5 × 100	0.20	5.80	EKMH201LGC562MDA0M	6,800	76.2 × 140	0.15	9.50	EKMH351LGC682MEE0M	
6,800	63.5 × 120	0.20	6.90	EKMH201LGC682MDC0M	8,200	89 × 140	0.15	11.4	EKMH351LGC822MFE0M		
8,200	63.5 × 120	0.20	7.60	EKMH201LGC822MDC0M	400	180	35 × 50	0.10	0.80	EKMH401LGB181MA50M	
10,000	76.2 × 120	0.20	9.30	EKMH201LGC103MEC0M		220	35 × 50	0.10	0.90	EKMH401LGB221MA50M	
12,000	76.2 × 120	0.20	10.2	EKMH201LGC123MEC0M		270	35 × 50	0.10	1.00	EKMH401LGB271MA50M	
15,000	76.2 × 140	0.20	12.2	EKMH201LGC153MEE0M		330	35 × 60	0.10	1.20	EKMH401LGB331MA60M	
18,000	89 × 140	0.25	13.1	EKMH201LGC183MFE0M		390	35 × 60	0.10	1.30	EKMH401LGB391MA60M	
250	270	35 × 50	0.15	0.80		EKMH251LGB271MA50M	470	35 × 80	0.10	1.40	EKMH401LGB471MA80M

◆STANDARD RATINGS

WV (V <sub>dc</sub> )	Cap (μF)	Case size φD×L(mm)	tan δ	Rated ripple current (Arms/105°C, 120Hz)	Part No.	WV (V <sub>dc</sub> )	Cap (μF)	Case size φD×L(mm)	tan δ	Rated ripple current (Arms/105°C, 120Hz)	Part No.
400	560	35 × 80	0.15	1.40	EKM401LGB561MA80M	400	2,200	63.5 × 100	0.15	4.20	EKM401LGC222MDA0M
	680	35 × 100	0.15	1.70	EKM401LGB681MAA0M		3,300	63.5 × 120	0.15	5.50	EKM401LGC332MDC0M
	820	35 × 120	0.15	2.00	EKM401LGB821MAC0M		4,700	76.2 × 130	0.15	7.60	EKM401LGC472MED0M
	1,000	50 × 80	0.15	2.20	EKM401LGC102MC80M		5,600	89 × 140	0.15	9.40	EKM401LGC562MFE0M
	1,200	50 × 100	0.15	2.70	EKM401LGC122MCA0M		6,800	89 × 140	0.15	10.4	EKM401LGC682MFE0M
	1,500	50 × 120	0.15	3.30	EKM401LGC152MCC0M						

◆RATED RIPPLE CURRENT MULTIPLIERS

●Frequency Multipliers

Rated voltage (V <sub>dc</sub> )	Case diameter (mm)	Frequency (Hz)					
		50	120	300	1k	10k	50k
10 to 50	φ35 to φ89	0.95	1.00	1.03	1.05	1.09	1.12
63 & 80	φ35	0.90	1.00	1.06	1.10	1.18	1.22
	φ50 to φ89	0.95	1.00	1.03	1.05	1.09	1.12
100	φ35	0.82	1.00	1.12	1.22	1.30	1.33
	φ50	0.90	1.00	1.06	1.10	1.18	1.22
	φ63.5 to φ89	0.95	1.00	1.03	1.05	1.09	1.12
160 to 250	φ35	0.80	1.00	1.19	1.34	1.46	1.52
	φ50 & φ63.5	0.81	1.00	1.14	1.26	1.36	1.41
	φ76.2 & φ89	0.82	1.00	1.12	1.22	1.30	1.33
315 to 400	φ35 to φ89	0.80	1.00	1.19	1.34	1.46	1.52

The endurance of capacitors is reduced with internal heating produced by ripple current at the rate of halving the lifetime with every 5°C rise. When long life performance is required in actual use, the rms ripple current has to be reduced.